

Sarah Gwyer – textile artist

Bisa was born in Orange, New Jersey (America) and trained at Howard University where she began to experiment with fabric as a medium and became interested in collage techniques.

She earned a Master's in Art from Montclair State University and found her signature style from making a **portrait quilt** for her grandmother. Butler was an art teacher for 10 years and her artwork is exhibited around the world.

Bisa Butler



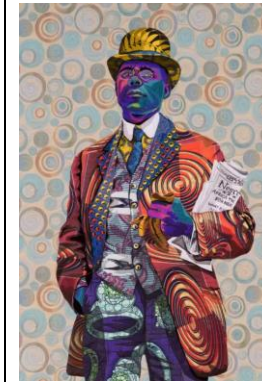
Bisa Butler is an award winning African American textile artist known for vibrantly stunning larger-than-life-sized quilted portraits. She creates portraits that tell stories of ordinary people.



Significant and famous works

Emmet Scott

Emmett J. Scott was a Special Assistant to the Secretary of War during World War I. Scott's role was a brand new one, that of Black Affairs. The position was significant insight into efforts of the American federal government. The individual in the position, however, was **critically important**. He was an expert in **journalism and war reporting** and had experience in an advisory role. This combination of experience made him an ideal candidate for the new government position. Scott's role was to report on the conditions of the Black soldiers during WWI.



Wangari Maathai was the first woman in Central and East Africa to earn a Ph.D., but she learned the ways of the world by planting trees. In 1977, she founded the Green Belt Movement to teach peasant women livelihoods while reforesting urban areas. She won a Parliament seat with 98% of the vote and was awarded the Nobel Peace Prize in 2004. By the time of her death in 2011, Maathai had taken on palm-oil plantations in Southeast Asia, and her movement, with branches in 30 countries, had planted 50 million trees.



Stitches and Techniques:

Terms explained:

Contemporary

Art that reflects what is around us today. Quilting involves joining a minimum of three layers of fabric together by stitching. Families sometimes used quilts to recount their family history and would add to them with each generation.

Quilting

Embroidery

Method used to decorate fabric with needle and thread

Embellishment

Decorative detail added to something to make it more attractive.

**Beading
Stitching**

Stringing and sewing beads into designs. Creating a row of stitches sewn onto cloth.



Back Stitch



Chain Stitch



Blanket Stitch



Running Stitch



Satin Stitch

Materials and Resources:



Embroidery Beading



Embroidery Stitching